

**OH** *Come,*



**LET US ADORE**

**YOU**



**THIS CHRISTMAS**



---

CELEBRATE & PARTY

---

---

3 DAYS OF JOY

---

---

FESTIVE TASTES

---

---

RING IN THE NYE

---

---

AWAKE IN STYLE

---

---

BOOKINGS

---

# CELEBRATE & PARTY

## YULETIDE ON THE WATERFRONT



Give your guests a memorable time and book them in for a festive feast of culinary treats. Celebrate with your party of friends, colleagues and family with a menu of exquisite delights from our waterside Eaterie and raise a little glass or two of merry cheer! There's no better setting for a joyful gathering of friends.

### LUNCH / 12noon-5.30PM

£32 pp (Sun-Thurs) / £36pp (Fri-Sat)  
Includes three courses with cafetière coffee.

### DINNER / 6-10PM

£36 pp (Sun-Thurs) / £39 pp (Fri-Sat)  
Includes three courses with cafetière coffee.



[BACK](#)

[FESTIVE PARTIES](#)

[XMAS PACKAGE](#)

[XMAS](#)

[NYE](#)

[ROOMS](#)

[BOOKINGS](#)

[NEXT](#)





# 3 DAYS OF JOY

## OUR FULL CHRISTMAS PACKAGE



Arrive to a warm welcome on Christmas Eve and stay until the 27th. Come and enjoy all the trimmings of a special Christmas and relax in style. Put your stockings up and let us entertain your every wish.

### CHRISTMAS EVE DINNER

Our tables will be set to get you into the festive spirit to enjoy our menu of temptations.

### CHRISTMAS DAY

Relax into a feast befitting a king, we'll bring Christmas to life on your table. A light buffet dinner will be served up in the evening.

### BOXING DAY DINNER

An evening of exceptional choices will be available on our menu to make your last night with us as special as the first.

**3 days all inclusive from £390PP**

(Additional nights from £99 for Bed and Breakfast)



[BACK](#)

[FESTIVE PARTIES](#)

[XMAS PACKAGE](#)

[XMAS](#)

[NYE](#)

[ROOMS](#)

[BOOKINGS](#)

[NEXT](#)



# FESTIVE TASTE

A FEAST OF DELIGHTS



Share in the exquisite creations and the skilled culinary mastery of our acclaimed award-winning Eaterie. Our head chef and his highly gifted team are the stars of our Christmas, they have created a stunning array of special treats for our festive menu to cast your eyes over.

## CHRISTMAS EVE

LUNCH 12-5.30pm DINNER 6pm - 9.30pm  
A La Carte Menu

## CHRISTMAS DAY LUNCH (12.30 - 2pm)

Champagne and delicious canapés on arrival followed by a five course feast.

£105 per adult / £50 per child (half portion)

## CHRISTMAS DAY DINNER (7 - 9.00pm)

£55 pp. Includes three courses with cafetière coffee.

## BOXING DAY (12noon - 9pm)

3 course feast and cafetière coffee £39 pp.



[BACK](#)

[FESTIVE PARTIES](#)

[XMAS PACKAGE](#)

[XMAS](#)

[NYE](#)

[ROOMS](#)

[BOOKINGS](#)

[NEXT](#)





# RING OUT

SEE IN THE NEW YEAR



## PRE PARTY DINNER (6pm - 7.15pm)

Set yourself up with a fabulous meal before you party the night away. Sit down for a 3-course dinner, with cafetière coffee to follow. £39pp.

## NEW YEARS EVE DINNER (from 8.30pm)

Start as you mean to finish the year, with a bit of sparkle. We'll have canapés and a glass of chilled Champagne ready for your arrival followed by a four-course dinner & cafetière coffee. £88 pp.

## NEW YEARS DAY (12noon - 9pm)

Enjoy a three-course feast & cafetière coffee. £39 pp.



[BACK](#)

[FESTIVE PARTIES](#)

[XMAS PACKAGE](#)

[XMAS](#)

[NYE](#)

[ROOMS](#)

[BOOKINGS](#)

[NEXT](#)



# WAKE IN STYLE

FLOW WITH FESTIVE JOY



Relax and enjoy Christmas and New Year in richly deserved style. Our award-winning 4 star luxury hotel is a magical location to spend a little time over the festive period. Nestled in the idyllic calm of Ipswich marina and yet a stone's throw from the town Centre shopping or the beautiful coastline, you will be pampered with all the trimmings of a glorious festive treat. Get away from it all and enjoy the artfully designed comfy chic surroundings with your guests, or cast off for a luxurious night or two with your partner.

## STARRY NIGHTS

Enjoy Bed and Breakfast with a bottle of fizz in your room on arrival. From £145 per room.  
1st November - 30th December 2018

## NYE RATES

From £185 per room including breakfast.  
Upgrade to include our New Year's Eve Dinner, from £173 per person.



[BACK](#)

[FESTIVE PARTIES](#)

[XMAS PACKAGE](#)

[XMAS](#)

[NYE](#)

[ROOMS](#)

[BOOKINGS](#)

[NEXT](#)





# BOOKING

YOUR CHRISTMAS



For further information, menus and to make a booking please:

CALL US: 01473 226789

EMAIL:

[celebrations@salthouseharbour.co.uk](mailto:celebrations@salthouseharbour.co.uk)

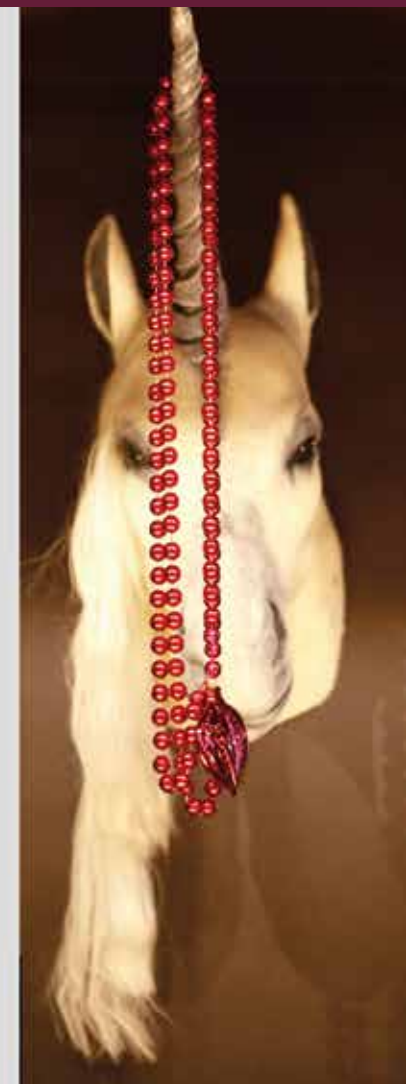
OR VISIT:

[www.salthouseharbour.co.uk](http://www.salthouseharbour.co.uk)

Bookings must be made in advance.  
Booking terms & some exclusion dates apply.

**The Salthouse Harbour Hotel**

Neptune Quay, Ipswich, Suffolk, IP4 1AX



BACK

FESTIVE PARTIES |

XMAS PACKAGE |

XMAS |

NYE |

ROOMS |

**BOOKINGS**